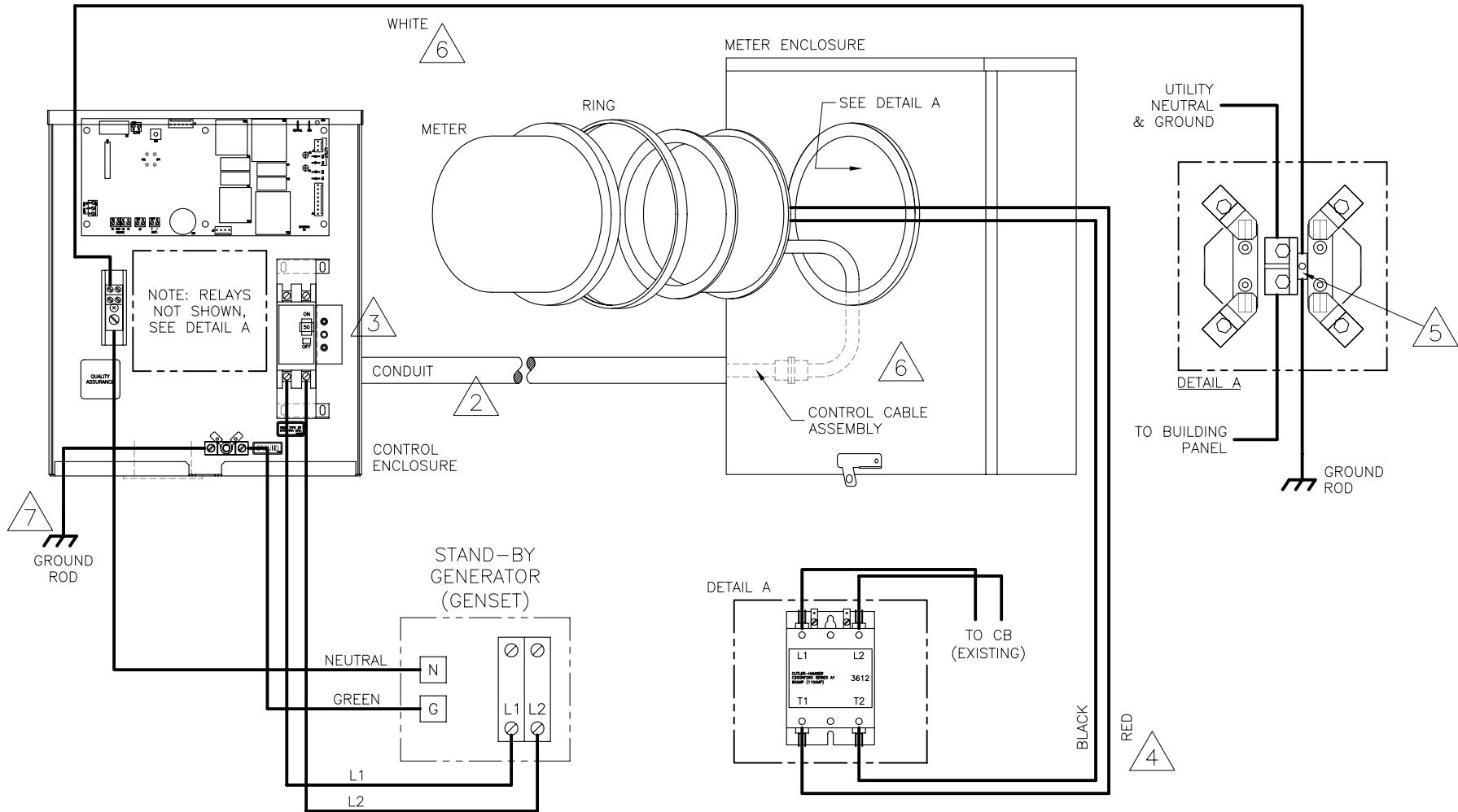


HHDrawings\LH116.B.dwg-2/22/2005-3:06:43 PM



NOTES:

1. MOLDED CABLE ATTACHED TO METER INTERBASE VIA SPECIAL CONNECTOR.
2. MOUNT ENCLOSURE WITHIN 36" OF METER SOCKET TO ALLOW FOR CORRECT CABLE FIT.
3. CIRCUIT BREAKER, TWO-COLOR STATUS LIGHTS.
4. GENERATOR HOOKUP AT CB, NEUTRAL BLOCK (FLOATING) & GROUND BUS.
5. USE GTA-0-0 TYPE CONNECTOR AND "ATTACH", DO NOT REMOVE EXISTING WIRE.
6. CONTROL CABLE, WHITE, RED AND BLACK WIRES ARE FIELD-INSTALLED AND ARE TO BE ROUTED THROUGH CONDUIT TO CONTROL ENCLOSURE.
7. (8AWG, MIN) COPPER GROUND WIRE MUST BE CONNECTED TO SERVICE/UTILITY GROUND ROD.
8. U.S. PATENT NO. 6,074,246.

Rev.B 02-03-05: Updated per markup and LW137 rev.E.

PROPRIETARY AND CONFIDENTIAL NOTE: THE INFORMATION CONTAINED IN THIS DRAWING IS THE SOLE PROPERTY OF ELECTRO INDUSTRIES INC. ANY REPRODUCTION IN PART OR AS A WHOLE WITHOUT THE WRITTEN PERMISSION OF ELECTRO INDUSTRIES INC. IS PROHIBITED.	DESCRIPTION ELECTRO GENCONNECT (LG/TC)-100M23(W,Y) HOOKUP		ELECTRO INDUSTRIES, INC. MONTICELLO, MN 55362	SHEET 1/1	SCALE 1:6	PART/MODEL NUMBER **-100M23*
		DRAWN MEF	CHECKED 	APPROVED 	DATE 02-03-05	REV/STATUS B