

Specification Data Sheet - Mini-Boiler™

STANDARD EQUIPMENT

- Controls and control wiring terminals
- LED indicator lights
- DC Power Relays
- Hi-limits: 1st - automatic reset at 160° F
2nd - manual reset at 205° F
- Circulator switching relay - 10-amp maximum
- Thermostat or end switch connection (R and W)
- Load management control provisions
- Heavy duty sheet metal enclosure
- 1 gl. Steel vessel ASME "H" Stamp (20-year warranty)
- Pressure/temperature gauge
- Safety relief valve (30 PSI)
- Heating elements (20-year warranty)
- 2-year parts warranty
- EMB-W-9 senses target supply temperature and modulates electric element
- ASME/CSA listings
- Made in the USA

WATER FLOW REQUIREMENTS (MINIMUM 1 GPM WATER FLOW THROUGH BOILER)

Model	Water Temperature Rise											
	Flow - 10° F/6° C		Head Loss		Flow - 20° F/11° C		Head Loss		Flow - 30° F/16° C		Head Loss	
	gpm	lpm	ft	m	gpm	lpm	ft	m	gpm	lpm	ft	m
EMB-W-9	6.14	23.20	.23	.07	3.07	11.60	.10	.03	2.04	7.71	.06	.018

Note: Head Loss based on 110° F return temperature.

ELECTRIC SUPPLY

Model	Volts	Watts	Amps	kW	Phase	Btu/h
EMB-W-9	240	9,000	37.5	9	1-60	30,717

SHIPPING WEIGHT

Model	Weight (lbs)
EMB-W-9	53

CLEARANCES

	MINIMUM CLEARANCE FROM COMBUSTIBLE SURFACES		SUGGESTED MINIMUM SERVICE CLEARANCE	
BACK	0 INCH	0 MM	0 INCH	0 MM
LEFT	1 INCH	25 MM	6 INCHES	152 MM
RIGHT	1 INCH	25 MM	6 INCHES	152 MM
FRONT	1 INCH	25 MM	24 INCHES	610 MM
TOP	1 INCH	25 MM	24 INCHES	610 MM
BOTTOM	REQUIRED CLEARANCE - 10 INCHES/254 MM			



Specifications subject to change without notice, all rights reserved.



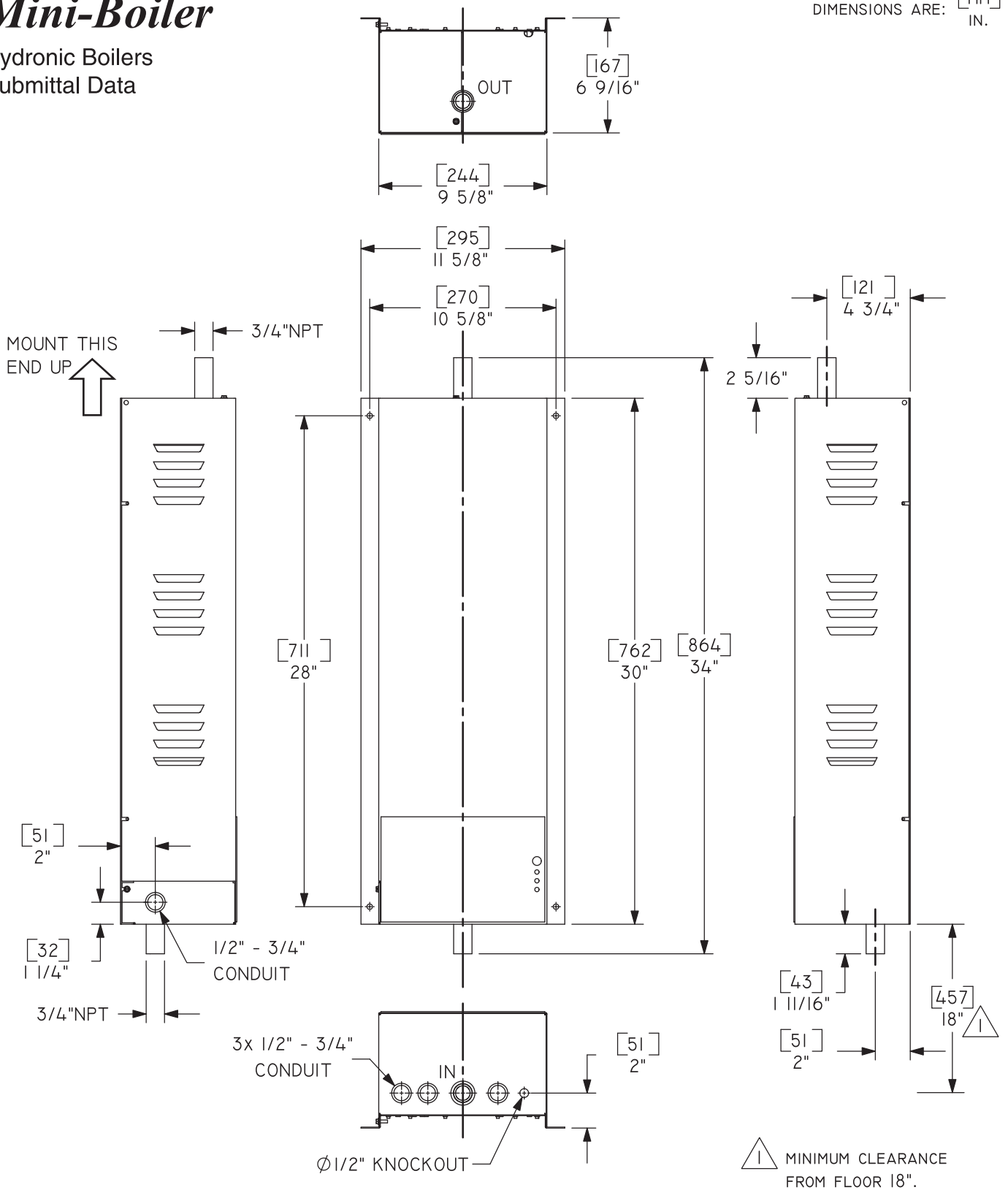
ELECTRO INDUSTRIES, INC.

2150 West River Street, PO Box 538, Monticello, MN 55362
763.295.4138 • 800.922.4138 • fax 763.295.4434
sales@electromn.com • www.electromn.com

Mini-Boiler

Hydronic Boilers
Submittal Data

DIMENSIONS ARE: MM
IN.



MINIMUM CLEARANCE FROM FLOOR 18".