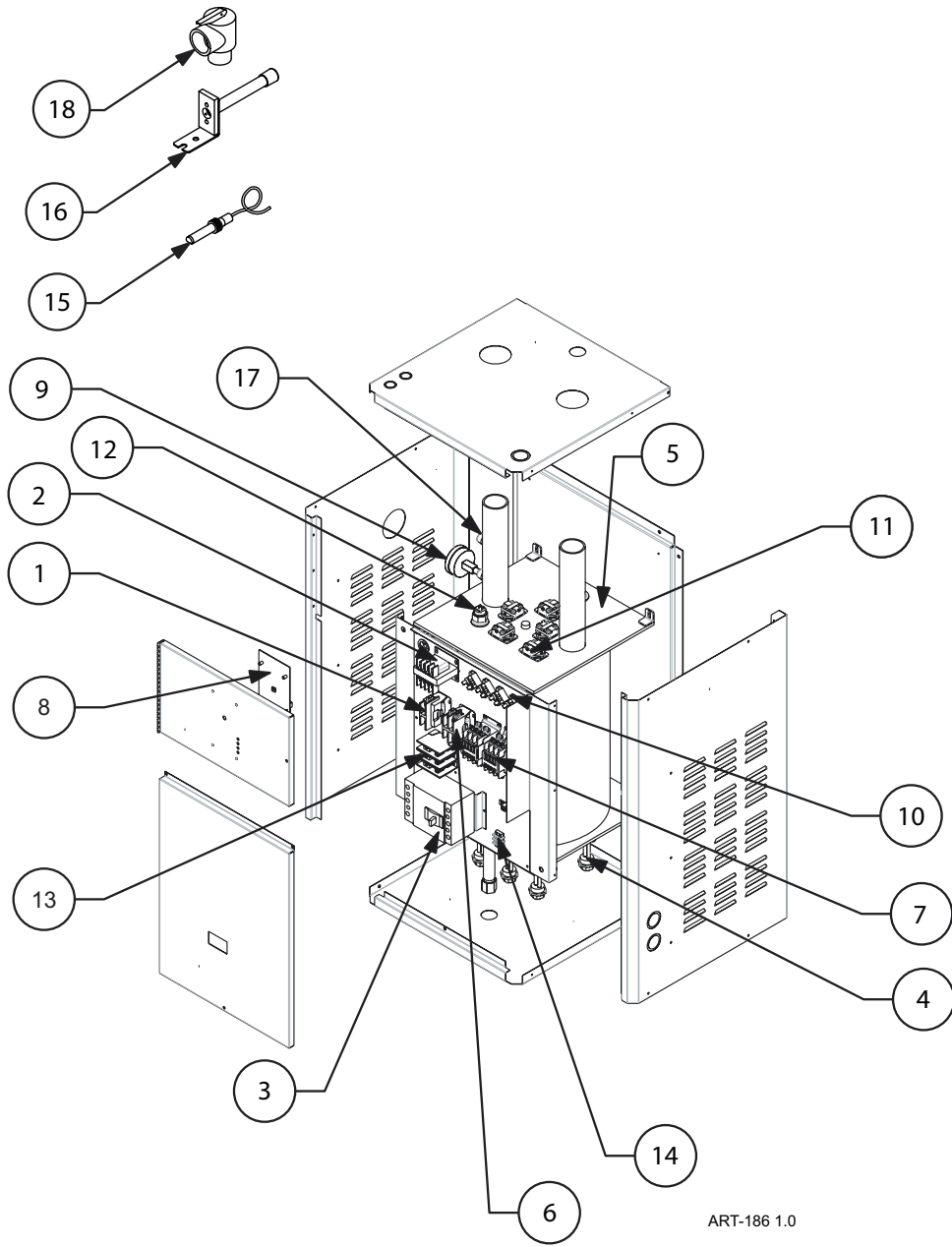


TS Commercial Electro-Boiler™

EB-C-** and EB-C-**-** Series



ART-186 1.0

(SEE NEXT PAGE FOR PARTS LIST)

TS Commercial Electro-Boiler™

EB-C-** and EB-C-**-** Series

Replacement Part #	Description
--------------------	-------------

EB-C-18-48		
1	5528	30-Amp Single Pole Contactor Relay
2	5542	50 VA Transformer
3	5661	Square D 30-Amp 3 Phase Circuit Breaker
4	EB5525	6 kW Element with Gasket
5	EBVS18-48	18 kW Vessel Assembly

EB-C-36-48		
1	5528	30-Amp Single Pole Contactor Relay
2	5542	50 VA Transformer
3	5662	Square D 60-Amp 3 Phase Circuit Breaker
4	EB5525	6 kW Element with Gasket
5	EBVS36-48	36 kW Vessel Assembly
6	5126	30-Amp Two Pole Contactor Relay

EB-C-54-48		
1	5528	30-Amp Single Pole Contactor Relay
2	5542	50 VA Transformer
3	5663	Square D 80-Amp 3 Phase Circuit Breaker
4	EB5525	6 kW Element with Gasket
5	EBVS54-48	54 kW Vessel Assembly
6	5126	30-Amp Two Pole Contactor Relay
7	5527	30-Amp Three Pole Contactor Relay

EB-C-27-20		
1	5528	30-Amp Single Pole Contactor Relay
2	5541	40VA Transformer with Pigtailed
3	5658	Square D 100-Amp 3 Phase Circuit Breaker
4	EB5521	4.5 kW Element with Gasket (3-Phase)
5	EBVS27-20	27 kW Vessel Assembly
6	5126	30-Amp Two Pole Contactor Relay

EB-C-40-20		
1	5528	30-Amp Single Pole Contactor Relay
2	5541	40 VA Transformer with Pigtailed
3	5660	Square D 150-Amp 3 Phase Circuit Breaker
4	EB5521	4.5 kW Element with Gasket (3-Phase)
5	EBVS40-20	40 kW Vessel Assembly
6	5126	30-Amp Two Pole Contactor Relay
7	5527	30-Amp Three Pole Contactor Relay

EB-C-27-24		
1	5528	30-Amp Single Pole Contactor Relay
2	5541	40 VA Transformer with Pigtailed
3	5657	Square D 80-Amp 3 Phase Circuit Breaker
4	EB5520	4.5 kW Element with Gasket
5	EBVS27-24	27 kW Vessel Assembly
6	5126	30-Amp Two Pole Contactor Relay

Replacement Part #	Description
--------------------	-------------

EB-C-40-24		
1	5528	30-Amp Single Pole Contactor Relay
2	5541	40VA Transformer with Pigtailed
3	5659	Square D 125-Amp 3 Phase Circuit Breaker
4	EB5520	4.5 kW Element with Gasket
5	EBVS40-24	40 kW Vessel Assembly
6	5126	30-Amp Two Pole Contactor Relay
7	5527	30-Amp Three Pole Contactor Relay

EB-C-31		
1	5528	30-Amp Single Pole Contactor Relay
2	5541	40VA Transformer with Pigtailed
3	5653	Square D 80-Amp Circuit Breaker
3	5643S	Square D 100-Amp Circuit Breaker
4	EB5520	4.5 kW Element with Gasket
5	EBVS31	31 kW Vessel Assembly
6	5126	30-Amp Two Pole Contactor Relay

EB-C-36		
2	5541	40VA Transformer with Pigtailed
3	5653	Square D 80-Amp Circuit Breaker
3	5643S	Square D 100-Amp Circuit Breaker
4	EB5520	4.5 kW Element with Gasket
5	EBVS36	36 kW Vessel Assembly
6	5126	30-Amp Two Pole Contactor Relay

Common Parts for the EB-C- and EB-C-**-** Series**

8	EB5623CO	Control Board (Outdoor Sensor)
8a	UIC9266 R-105	Microchip v. 5.3* (Specify Code – CO)
8	EB5623CA	Control Board (No Outdoor Sensor)
8a	UIC9266 R-105	Microchip v. 5.3* (Specify Code – CA)
9	5456	Pressure / Temperature Gauge
10	5127	25-Amp DC Relay
11	5535	205° Manual Reset Limit
12	5537	190° Auto Reset Limit
13	VLUG5526	Main Terminal Block
14	2232	Pump Terminal Block
15	WFSB	Supply Sensor
16	WFS25F	Outdoor Sensor
17	5533	Sensor Well
18	5453	30 psi Relief Valve
19	XEL7800	¾" Pipe Elbow (<i>Not Shown</i>)
20	XNPL7775	¾" x 12" Pipe Nipple (<i>Not Shown</i>)
21	XCPL7075	¾" Pipe Coupling (<i>Not Shown</i>)
22	UFUSE0440	2-Amp Fast Blow Fuse (<i>Not Shown</i>)