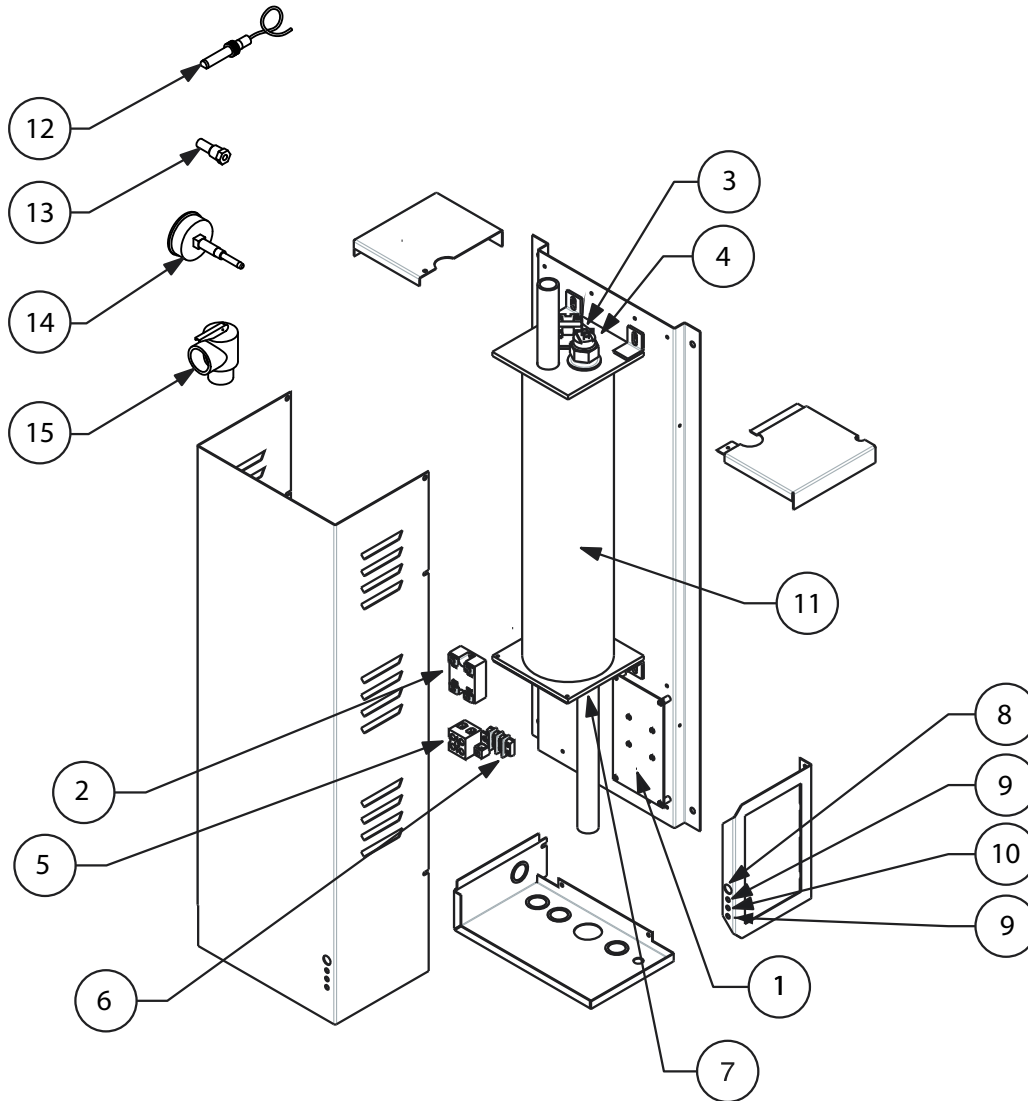


WarmFlo® Mini-Boiler™

EMB-W-9



ART-182 1.0

| Replacement Part # | Description | |
|--------------------|---------------|--|
| 1 | EMB5621 | Control Board |
| 1a | UIC9769 R-065 | Microchip v. 13.2* (Specify Code – A) |
| 1b | UIC9267 R-101 | Microchip v. 3.1* (Specify Code – A,) |
| 1 | WFCD25614 | Control Board (For units manufactured before April 2002) |
| 2 | 4037KIT | 50-Amp AC Triac Kit |
| 3 | 5535 | 205° Manual Reset Limit |
| 4 | 5538 | 160° Auto Reset Limit |
| 5 | 6636 | Terminal Block |
| 6 | 2232 | Pump Terminal Block |
| 7 | EB5520 | 4.5 kW Element with Gasket |
| 8 | ULAMP2283 | Red Indicator Light |
| 9 | ULAMP2287 | Red Panel Mount LED |
| 10 | ULAMP2286 | Amber Panel Mount LED |

| Replacement Part # | Description | |
|--------------------|-------------|---|
| 11 | EMBVS9 | 9 kW Vessel Assembly |
| 12 | WFSB | Supply Sensor ("E" Sensor) |
| 12 | @WFSST10FT | Supply Sensor ("D" Sensor) – Chip date before July 2004 |
| 13 | 5533 | Sensor Well |
| 14 | 5456A | Pressure / Temperature Gauge |
| 15 | 5453 | 30 psi Relief Valve |
| 16 | XBSH7125 | ¾" x ¼" Pipe Bushing (Not Shown) |
| 17 | XEL7800 | ¾" Pipe Elbow (Not Shown) |
| 18 | XNPL7300 | ¾" x 2½" Pipe Nipple (Not Shown) |
| 19 | XTEE7000 | ¾" Pipe Tee (Not Shown) |
| 20 | XTEE7060 | ¾" Pipe Cross (Not Shown) |
| 21 | UFUSE0440 | 2-Amp Fast Blow Fuse (Not Shown) |