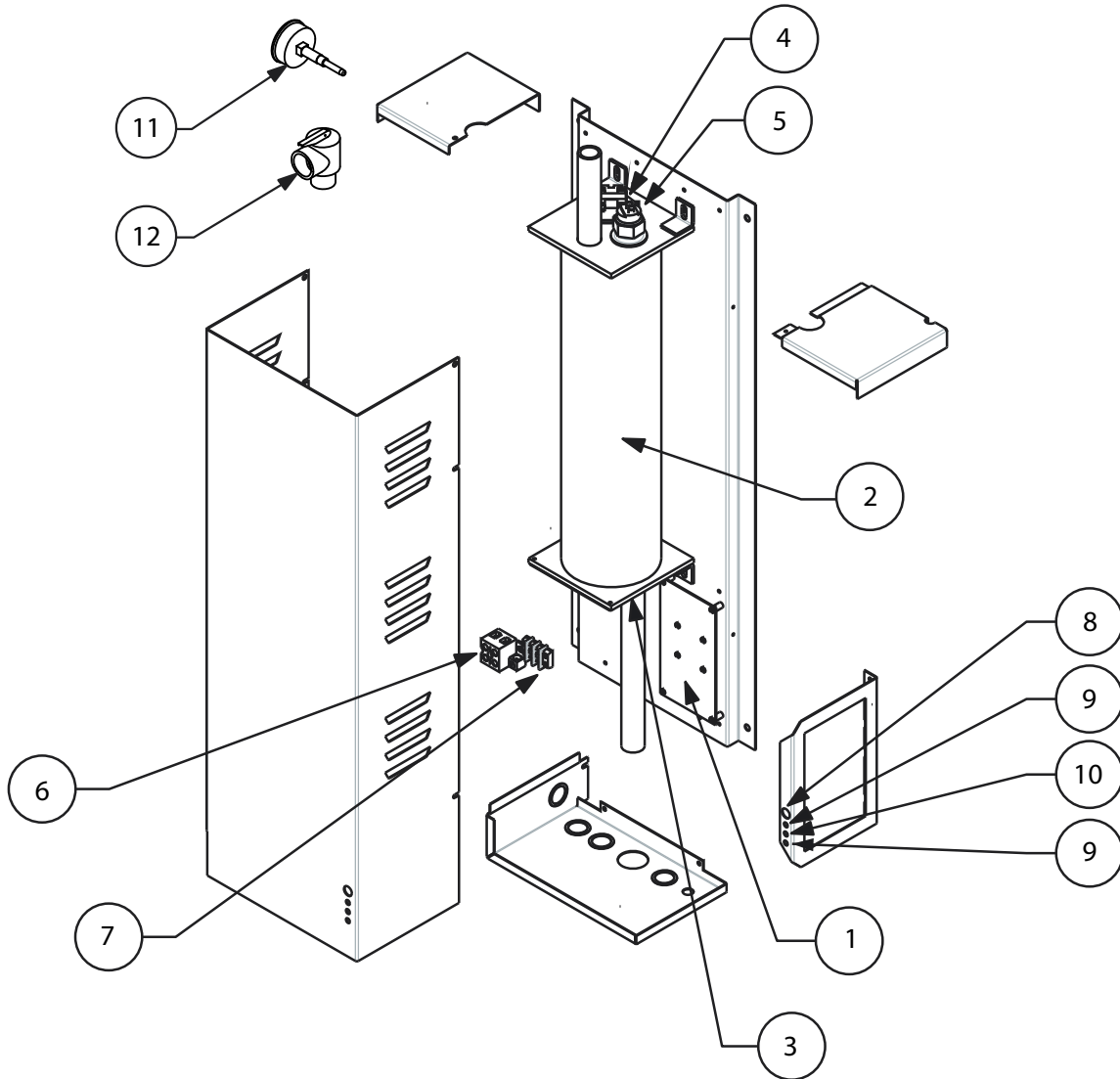


# Mini-Boiler™ EMB-\* Series



ART-181 1.0

Replacement Part #	Description	
--------------------	-------------	--

### EMB-2

1	EMB15620	Control Board
2	EMBVS2	2.5 kW Vessel Assembly
3	EB5523	2.5 kW Element with Gasket (120V)

### EMB-4

1	EMB15620	Control Board
2	EMBVS4	4 kW Vessel Assembly
3	EB5520	4.5 kW Element with Gasket

### EMB-5

1	EMB5620	Control Board
2	EMBVS1AND5	1 and 5 kW Vessel Assembly
3	EB5520	4.5 kW Element with Gasket

### EMB-9

1	EMB5620	Control Board
2	EMBVS9	9 kW Vessel Assembly
3	EB5520	4.5 kW Element with Gasket

Replacement Part #	Description	
--------------------	-------------	--

### Common Parts for the EMB-\* Series

4	5535	205° Manual Reset Limit
5	5538	160° Auto Reset Limit
6	6636	Terminal Block
7	2232	Pump Terminal Block
8	ULAMP2283	Red Indicator Light
9	ULAMP2287	Red Panel Mount LED
10	ULAMP2286	Amber Panel Mount LED
11	5456A	Pressure / Temperature Gauge
12	5453	30 psi Relief Valve
13	XBSH7125	3/4" x 1/4" Pipe Bushing (Not Shown)
14	XEL7800	3/4" Pipe Elbow (Not Shown)
15	XNPL7300	3/4" x 2 1/2" Pipe Nipple (Not Shown)
16	XTEE7000	3/4" Pipe Tee (Not Shown)
17	UFUSE0440	2-Amp Fast Blow Fuse (Not Shown)