

ELECTRO INDUSTRIES - FIELD SERVICE BULLETIN

Bulletin Number 1088 Date October 4, 2004

Product Name Zone Board, TS Series Boiler

Affected Product Model Numbers: EB-ZTS-1, EB-ZTS-2

Serial # for EB-ZTS-1: 53 through 70 / 81 through 94 / 101 through 110 / 121

Production Date February 23, 2004 through September 26, 2004

Serial # for EB-ZTS-2: 114 through 120

Production Date December 31, 2003

FIELD INFORMATION

Background

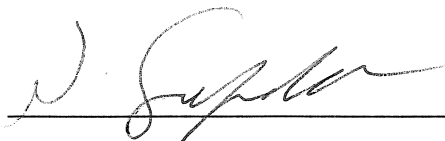
Subject: Field or installation wiring connections at the boiler R and W screw terminals.

There was an error on the hookup drawings, BH015 and BH016, relating to the boiler R and W terminals. The actual zone board product was correctly built and furnished with two white wires which must be connected to the boiler main board R and W. Also the installation manual, BI005, written page 2 is correct.

Discard hookup drawing Revision B and replace with Revision C dated 10/4/04.

Enclosure: BH015 Revision C – EB-ZTS-1
BH016 Revision C – EB-ZTS-2

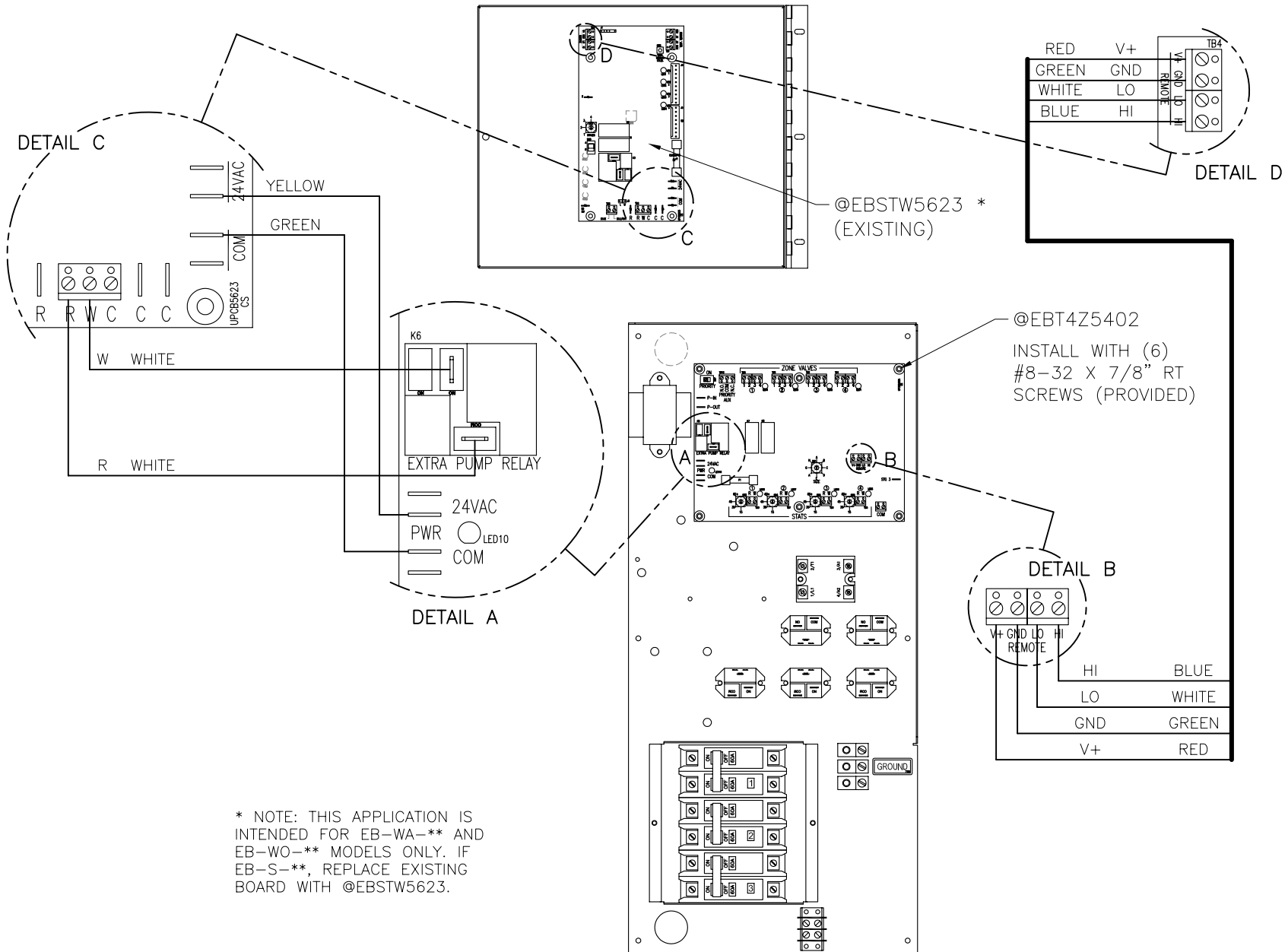
Approval



Date

10-5-04

EB-ZTS-1 INSTALLATION AND HOOKUP



H:\Drawings\BH\BH015-C.dwg - 10/4/2004 8:16:12 AM

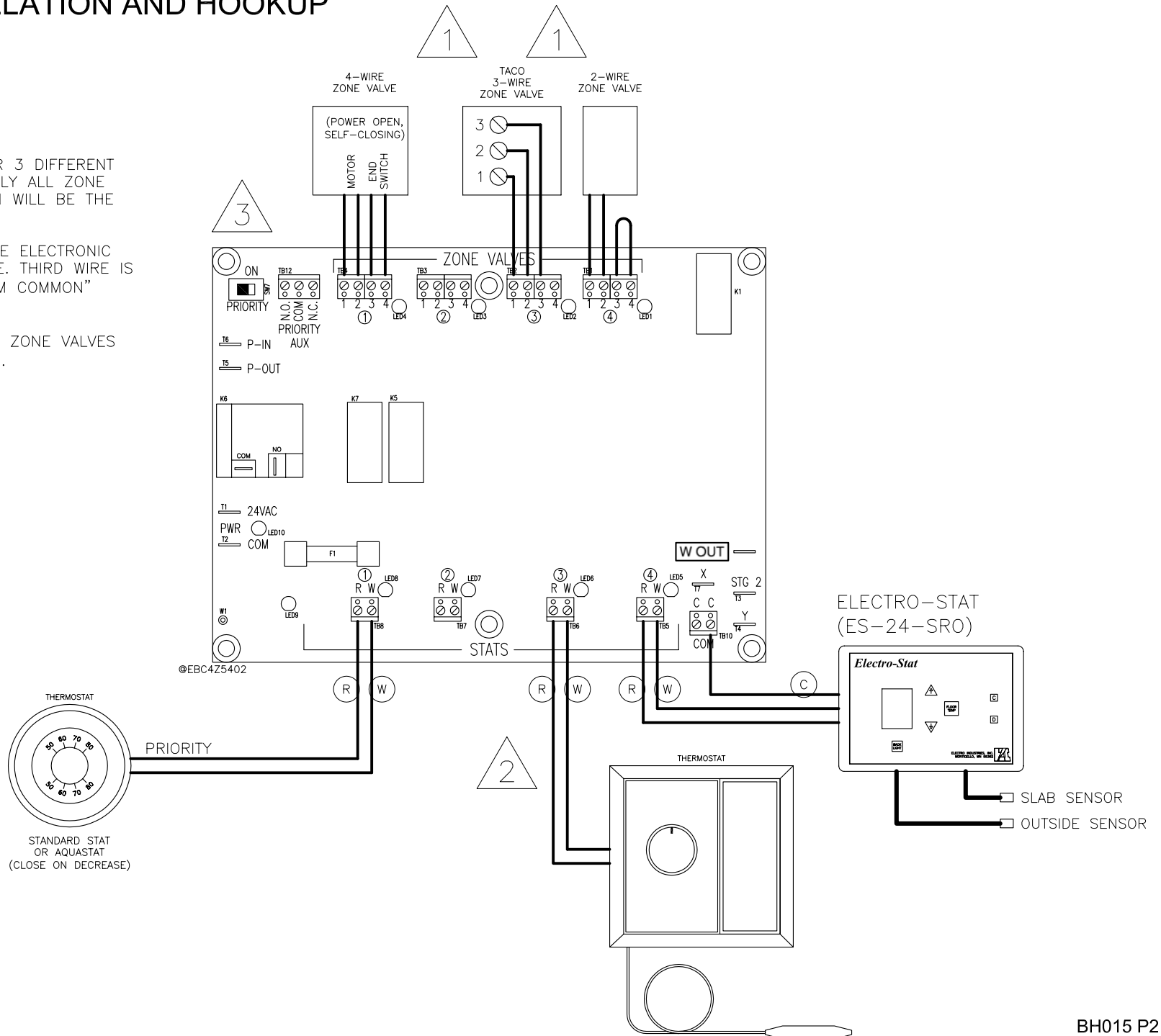
EB-ZTS-1 INSTALLATION AND HOOKUP

NOTES:

1. SHOWN IS HOOK-UP FOR 3 DIFFERENT ZONE VALVE TYPES. TYPICALLY ALL ZONE VALVES ON AN INSTALLATION WILL BE THE SAME TYPE.

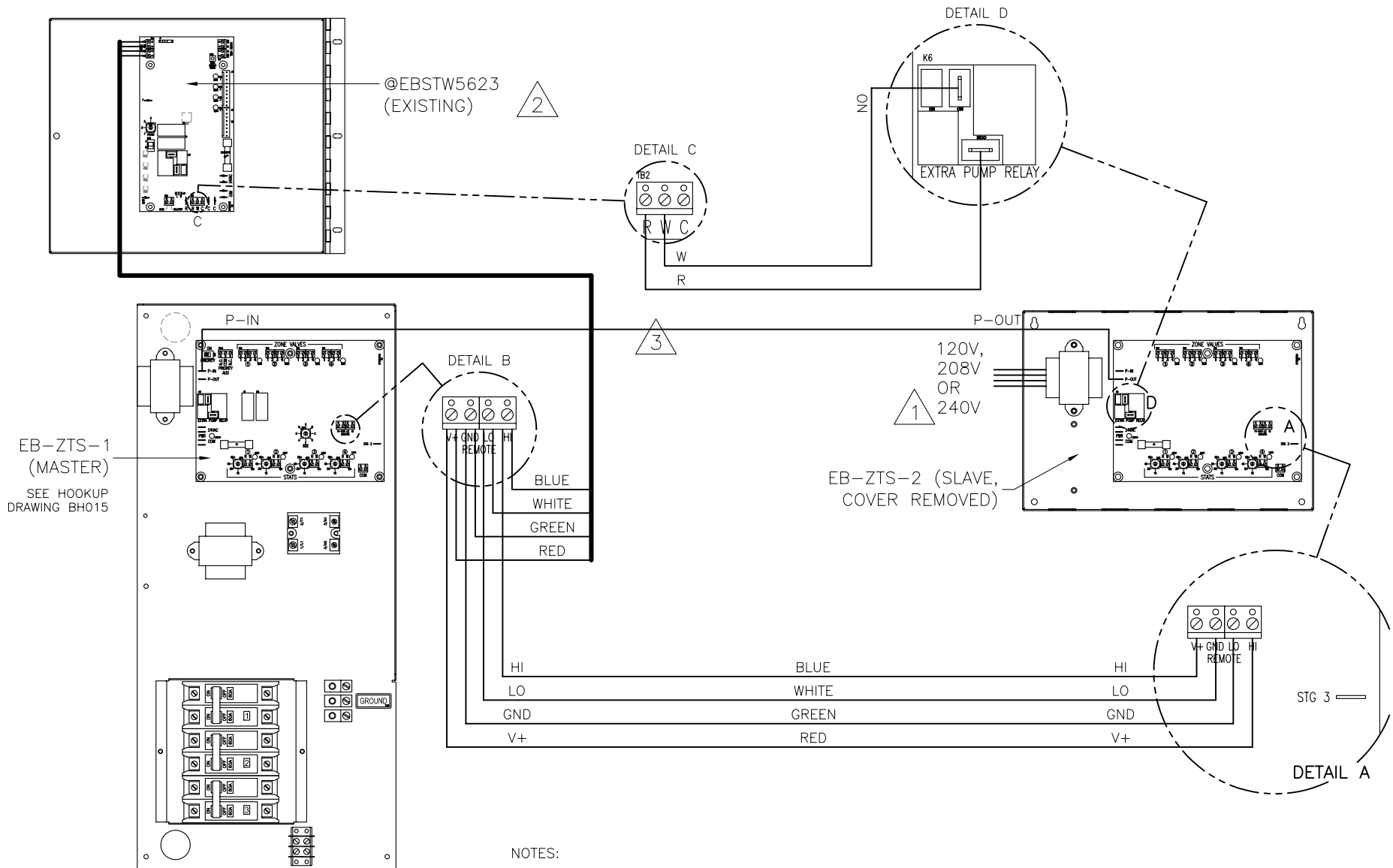
2. BASIC STAT SHOWN, SOME ELECTRONIC SLAB STATS MAY BE 3-WIRE. THIRD WIRE IS CONNECTED TO THE "SYSTEM COMMON" TERMINAL BLOCK.

3. IF PRIORITY IS "ON", ALL ZONE VALVES MUST HAVE "END" SWITCHES.



H:\Drawings\BH\BH015-C.dwg--10/4/2004 8:16:08 AM

EB-ZTS-2 INSTALLATION AND HOOKUP



NOTES:

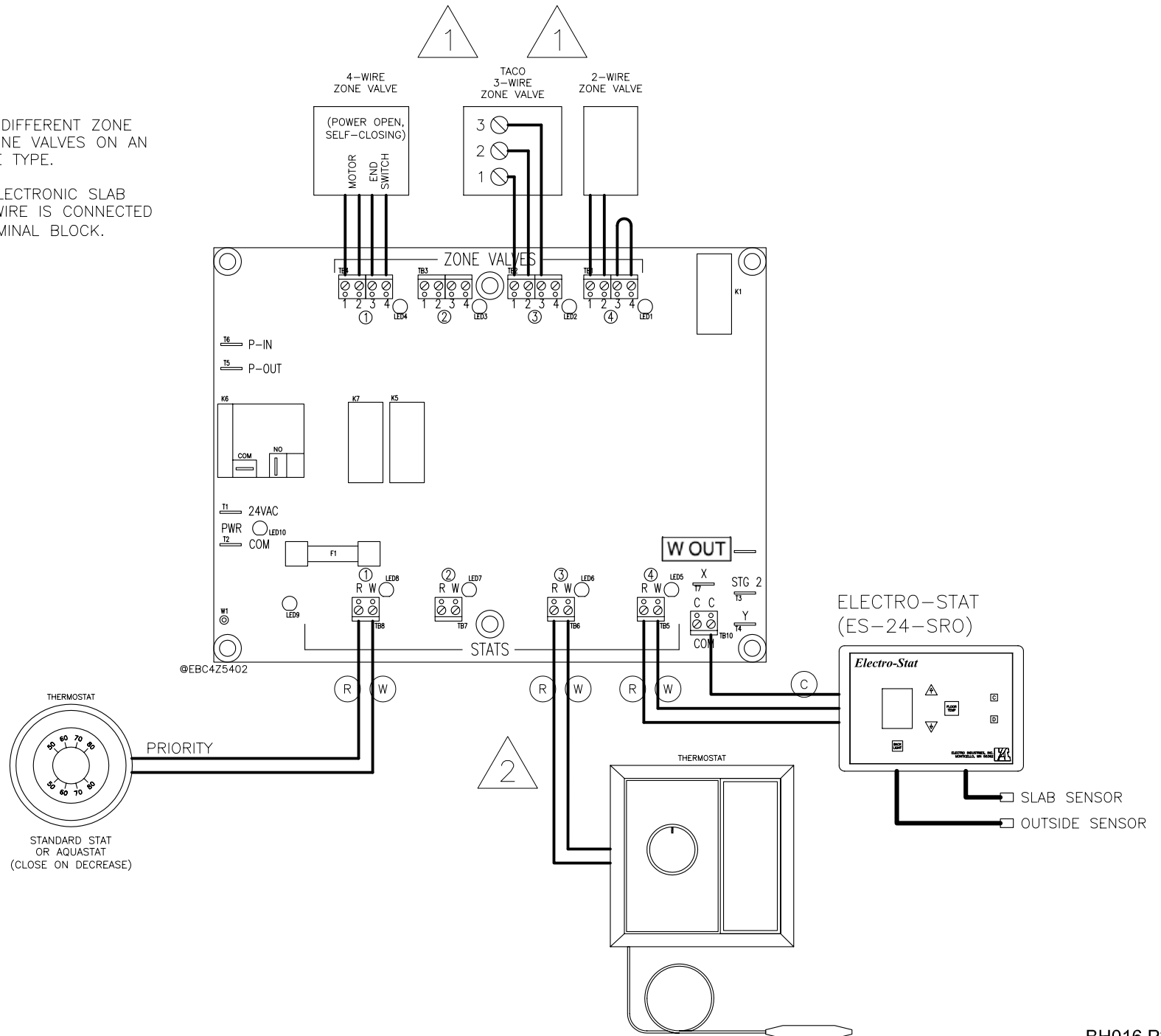
1. SEE WIRING SECTION OF INSTALL MANUAL FOR TRANSFORMER TAPS.
2. THIS APPLICATION IS INTENDED FOR EB-WA-** AND EB-WO-** MODELS ONLY. IF EB-S-**, REPLACE EXISTING BOARD WITH @EBSTW5623.
3. MUST HAVE P-OUT TIED TO P-IN.

H:\Drawings\BH\BH016-G.dwg - 10/4/2004 8:16:32 AM

FOUR-ZONE HOOKUP

NOTES:

1. SHOWN IS HOOK-UP FOR 3 DIFFERENT ZONE VALVE TYPES. TYPICALLY ALL ZONE VALVES ON AN INSTALLATION WILL BE THE SAME TYPE.
2. BASIC STAT SHOWN, SOME ELECTRONIC SLAB STATS MAY BE 3-WIRE. THIRD WIRE IS CONNECTED TO THE "SYSTEM COMMON" TERMINAL BLOCK.



H:\Drawings\BH\BH016-C.dwg - 10/4/2004 8:16:07 AM