

ELECTRO INDUSTRIES - FIELD SERVICE BULLETIN

Bulletin Number 1087 Date July 9, 2004

Product Name WarmFlo, Furnace Interface Module, 2-Speed HP Application

Affected Product Model Numbers: WF-HP2

Serial # _____ through _____

ARL # _____ through _____

Production Date July 12, 2004 through Future

FIELD INFORMATION

Background

This new WarmFlo heat pump "fossil fuel kit" is being promoted for all manufacturers' 2-speed heat pump equipment and in the future will have capability for all heat pump applications including using standard 4-wire heat/cool thermostat with 2-speed, high efficient, equipment. Attached is matrix showing various manufacturers with thermostat/outdoor unit/gas furnace hookup connections.

This service bulletin especially addresses Bryant and Carrier new communicating thermostat products. The trade names they are using for this new thermostat are **Evolution** and **Infinity**.

We've completed considerable research and evaluation on this new communicating thermostat and how it ties into the outdoor unit/gas furnace. Our initial conclusion is that this arrangement is impossible for load control or any type of interrupt or a WarmFlo system. During this research we spoke to local Carrier and Bryant technical representatives, they agree there's no known method of doing load control on this system and it has been reported to Carrier, they consider it a Carrier national problem.

Our observation is that this communicating thermostat uses an industry standard RS-485 bus arrangement and there are communication standards associated with it. However, within this digital communication there is obviously a software protocol proprietary to Carrier. For the past several years Electro Industries has used RS-485 2-wire communication on several products, we have our own protocol, but have the knowledge to build on someone else's protocol if that information could be licensed to Electro Industries. We believe we can overcome this load control issue with the Evolution and Infinity series products if there would be a method for Carrier to license the protocol information to Electro Industries.


Action

In the meantime the enclosed sheets show the Bryant and Carrier with Thermidistat™ multi-wire thermostat. The WF-HP2 interface module is compatible with this thermostat and associated outdoor/gas furnace units. We are supporting systems with the Thermidistat™ but not the Evolution or Infinity control.

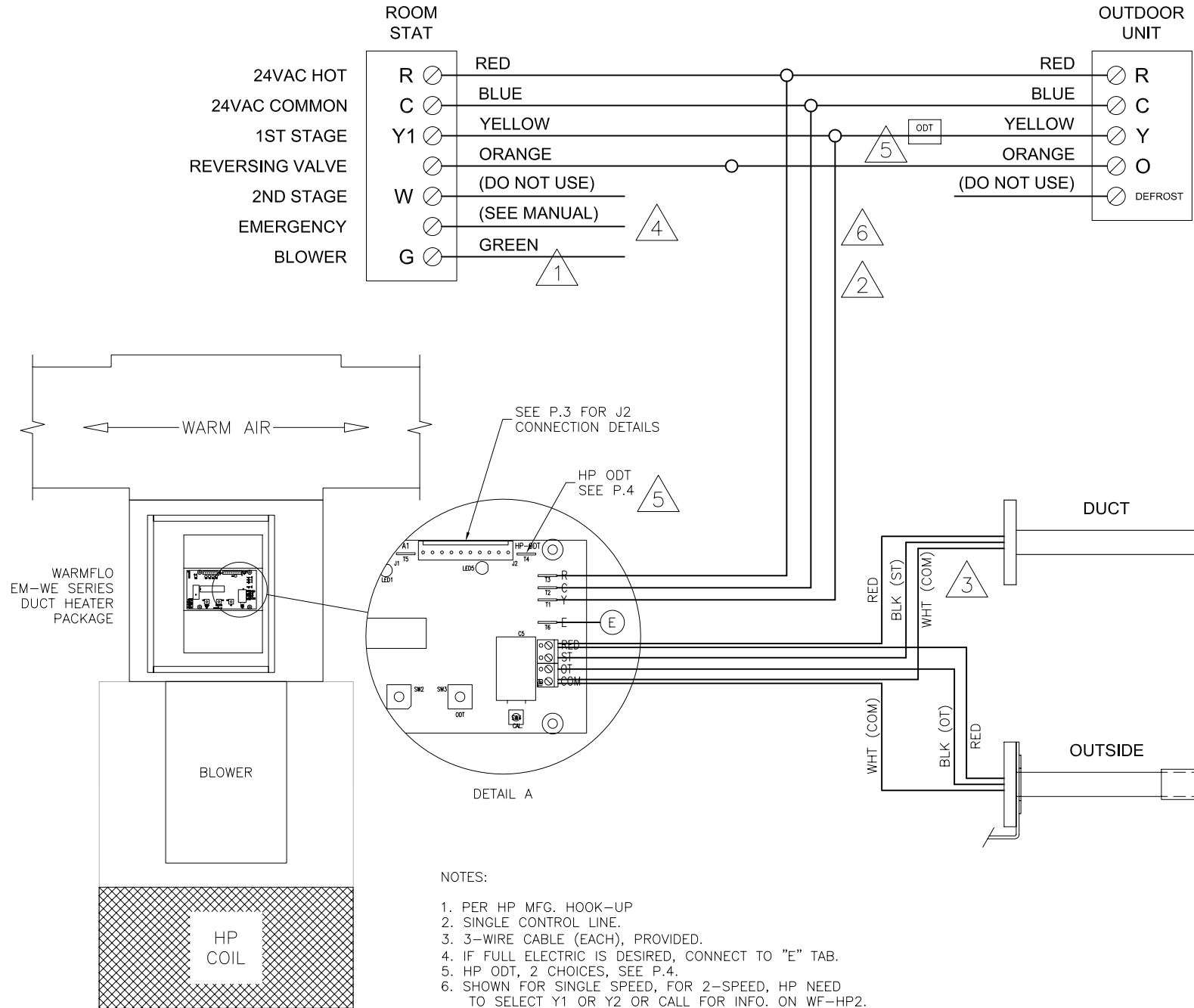
Summary

Electro Industries has no WarmFlo or load control or dual heat solution for Evolution or Infinity control systems as they are configured today. We are advising installing contractors and power companies these systems will probably have to be run on general service electric rate with no load control/Electro-Mate/WarmFlo and probably no rebate from electric utility.

Enclosure: HH332

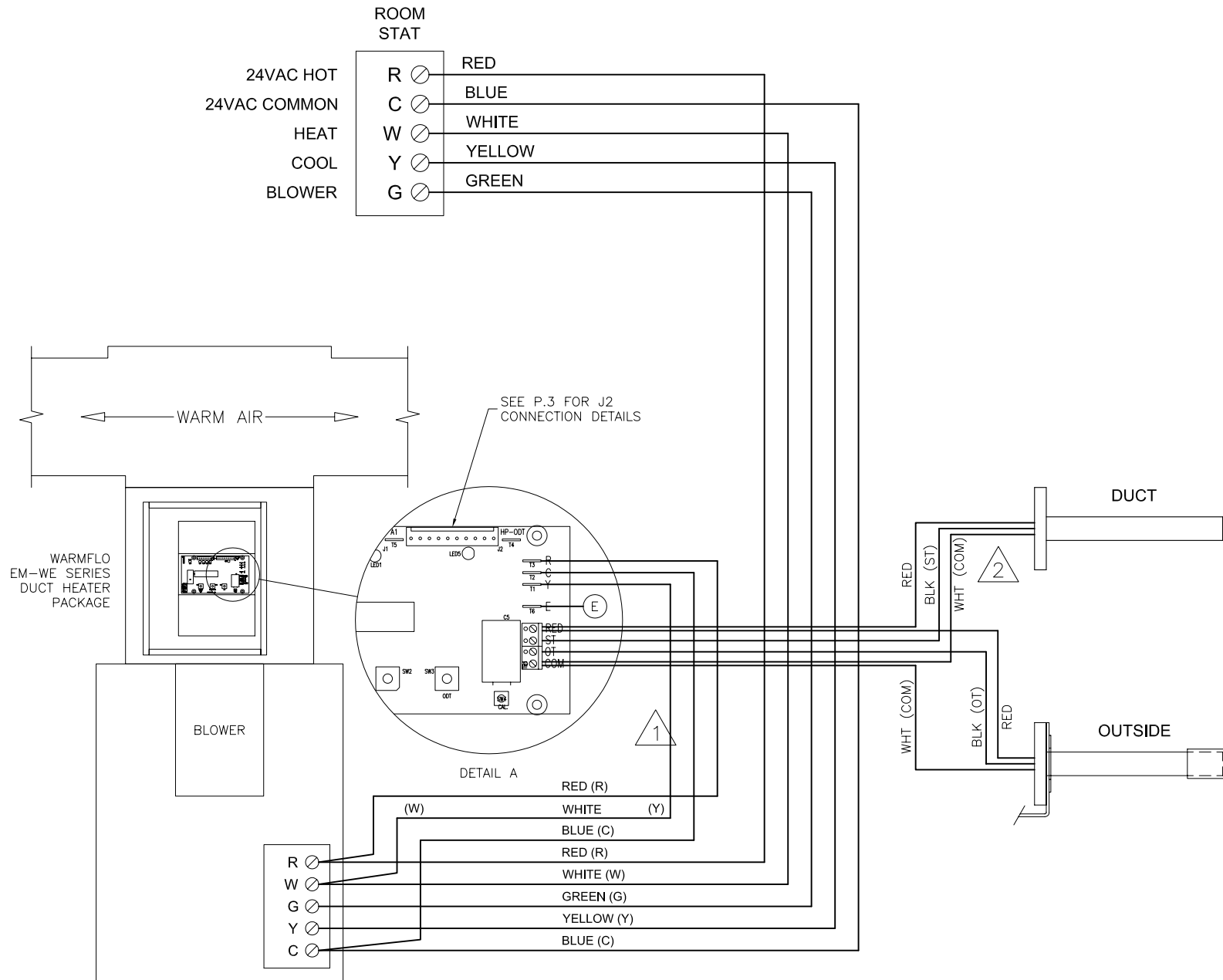
Approval  Date 7-9-04

HEAT PUMP, NON-DUAL HEAT, TOTAL ELECTRIC



HHDrawings\HH\HH332.dwg - 7/29/2004 - 10:09:48 AM

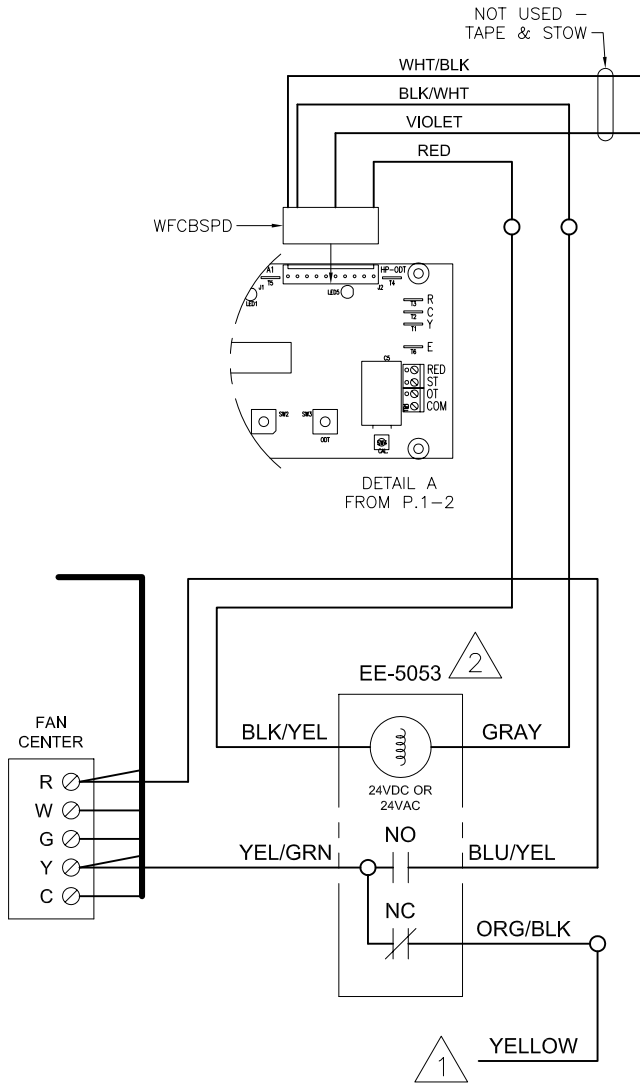
AIR HANDLER, NON-HP, WITH A/C



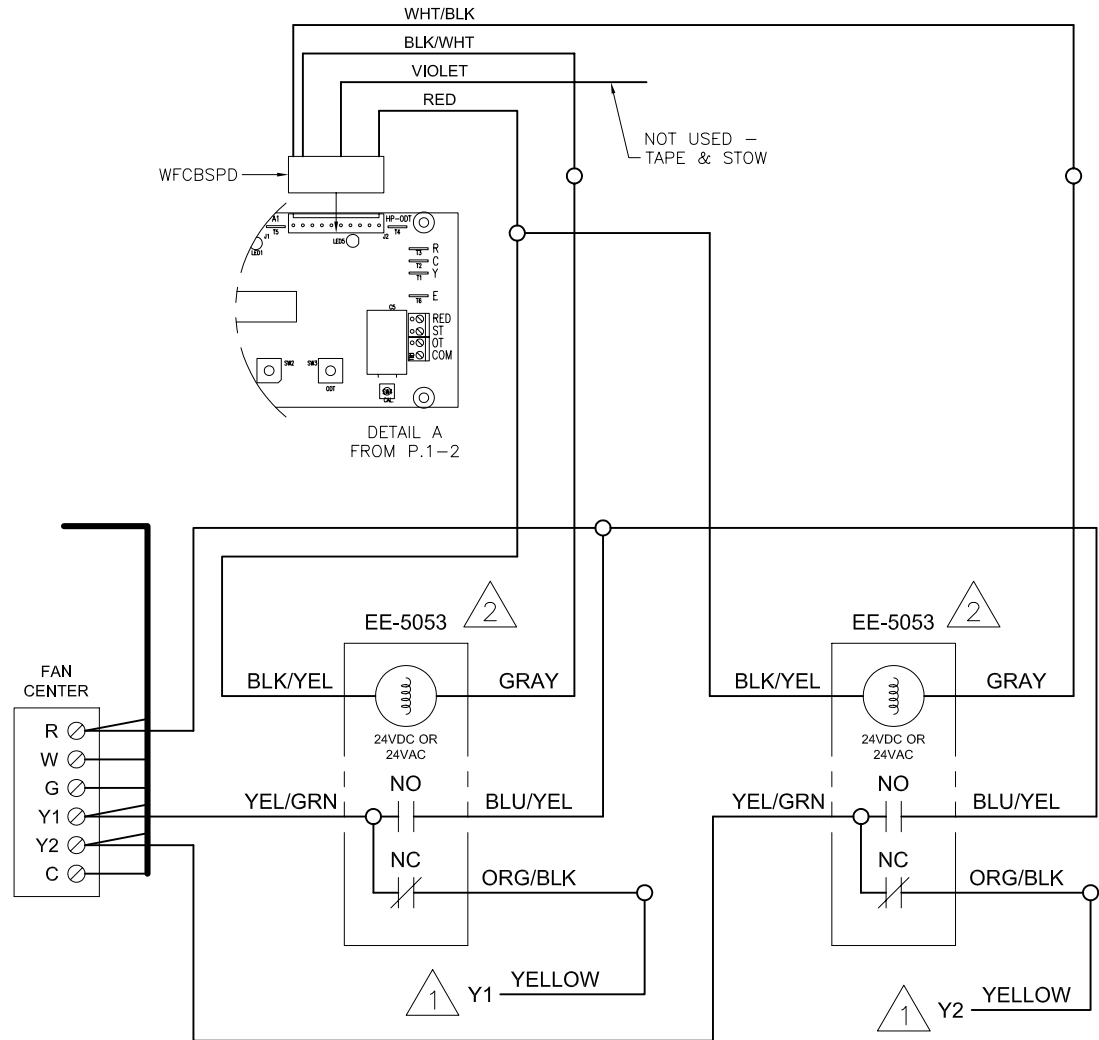
HHDrawings\HH\HH332.dwg-7/29/2004-10:00:10 AM

WARMFLO, EM-WE, OPTIONS

VARIABLE-SPEED - FULL BLOWER 40° OUTDOOR TEMP.



THREE-SPEED BLOWER 40° & 30° OUTDOOR TEMP.



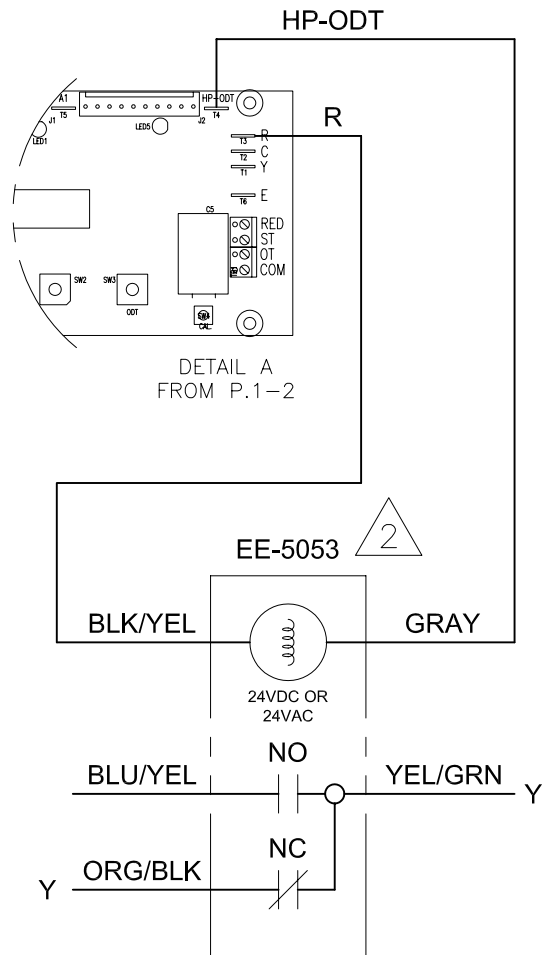
NOTES:

1. FROM ROOMSTAT, COOLING HIGH SPEED.
2. SPECIAL DC RELAY WITH FILTER, DO NOT USE STOCK RELAY.
3. ORDER BOTH EE-5053 RELAY AND WFCBSPD CABLE.

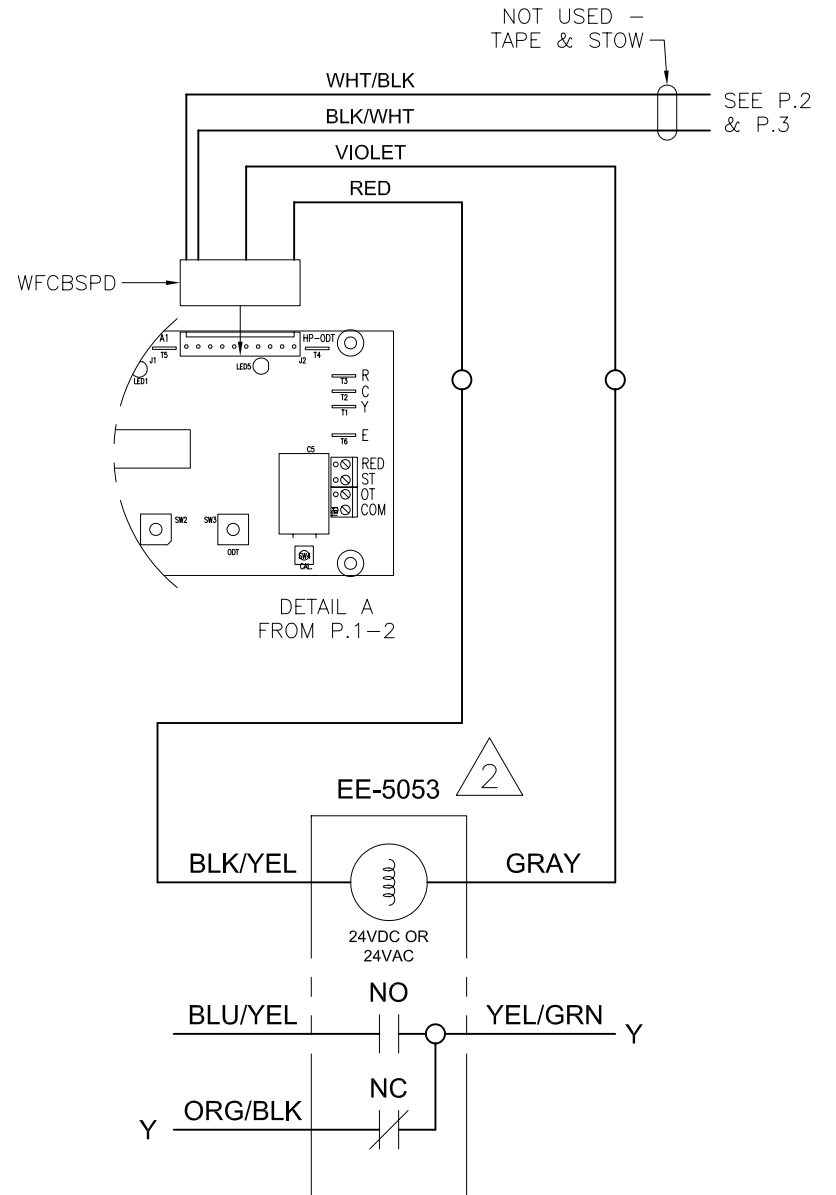


WF-ODT OPTIONS

WF-ODT, WITHOUT CABLE



WF-ODT, WITH CABLE



HHDrawings\HH\HH332.dwg - 7/29/2004 - 10:09:42 AM